

Installing Microsoft Office Document Imaging

Step 1

Locate your Office XP CDROM and insert it into the system. The system will initiate the installation program.

Step 2

When prompted to select the type of installation, select '**Add or Remove Features**' (Figure 1) then click '**Next**'.



Figure 1

Step 3

When prompted to specify the Features to install, scroll down to '**Office Tools**', right click '**Microsoft Office Document Imaging**' and select '**Run all from My Computer**' (Figure 2).

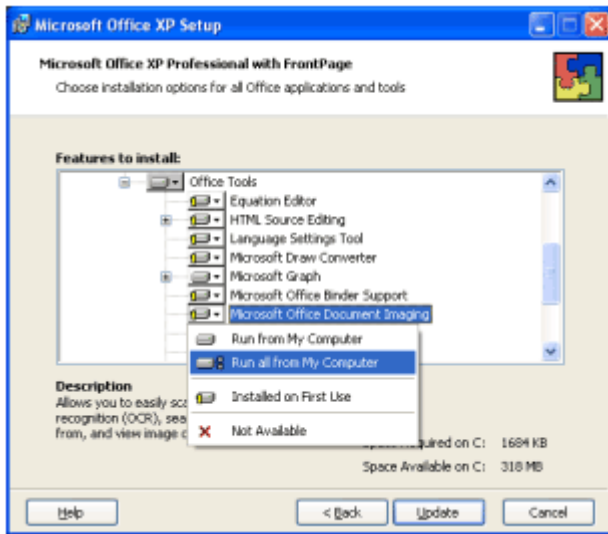


Figure 2

Step 4

Once the feature has been selected click '**Update**' to install it. Once installed, you are done.