



VERSION
5.3

Document Locator® Document Management Solutions

Release Innovations

Windows 7 Compatible

Document Locator version 5.3 leaps forward in Microsoft compatibility and works with the latest technology, including Microsoft Windows 7 and Microsoft Windows Server 2008 R2 (both 32-bit and 64-bit versions).

As a Microsoft Front Runner, ColumbiaSoft continues its tradition of being an early-adopter and providing document management compatibility with the most current technology on the market.

New .NET architecture in WebTools

Document Locator's optional web access (WebTools/WebView) is improved with new features and faster performance! Version 5.3 releases an entirely new .NET framework with advanced java scripting for the WebTools and WebView web clients, making possible a number of improvements now and into the future. While the user experience is familiar, the new architecture sets the stage for user-interface improvements, more efficient coding techniques that will increase performance, and server configuration enhancements to improve scalability. Immediate improvements include:

Easy Drag-and-Drop file import

A new, more Advanced Import Dialog allows Internet Explorer users to drag-and-drop files or folders into the import window. The browse-and-select method of file importing is still available. Both import dialogs have been enhanced to upload files through a single import process using the latest .NET technologies.

Column flexibility

A new file display screen now provides the ability to adjust column widths, rearrange column ordering, show and hide optional columns, and sort row results through context menus.

Calendar date picker

A new calendar-style date picker makes entering date-based metadata properties easier, while improving accuracy and consistency of date formatting. Users can now quickly select the correct date from a pop-open calendar view.

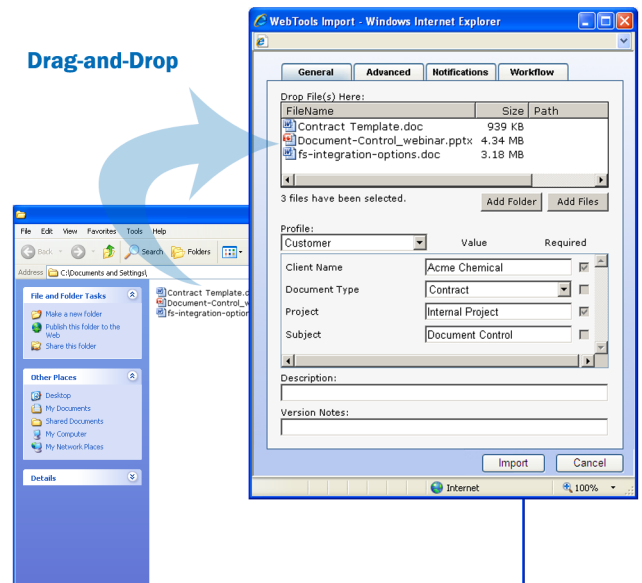
Improved user selection

A redesigned user-selection control makes it easier to find Document Locator users when creating a workflow or notification process. The user-selection control now displays and allows searching on additional metadata attributes, including department, title, and manager.

What's New

- Windows 7 Compatible
- New .NET architecture in WebTools
 - Easy Drag-and-Drop file import
 - Column flexibility
 - Calendar date picker
 - Improved user selection
- Faster AutoCAD integration with RealDWG
- Updated Brava! integration
- Improved Windows installer

Drag-and-Drop



It's now possible to drag-and-drop files when importing in WebTools using a new Advanced Import Dialog window. The previous browse-and-select import dialog is also still available.

Ready for



Faster AutoCAD integration with RealDWG technology

Integration with Autodesk RealDWG technology in version 5.3 speeds performance of CAD file management in the document management system.

RealDWG technology allows Document Locator to read and write CAD files much faster, improving the user experience and system efficiency. Document Locator now directly interacts with CAD files at a database query level, and because the RealDWG toolkit is integrated with the Document Locator client application, CAD file XREF and title-block information is available for all users regardless of whether AutoCAD is installed on the client machine. Among the benefits of AutoCAD integration are:

Organization and searching of CAD files is made easier by Document Locator's ability to extract title block values and other drawing attributes and automatically profile file information for fast retrieval.

- Prior versions of CAD drawings are maintained allowing reuse and retrieval.
- Direct access to document management functionality is possible through add-in style integration with AutoCAD's menus.
- Unified management of CAD files along with the documents and emails that make up a complete record of project information.

Updated Brava! integration

Integration with Informative Graphic's Brava! Enterprise and Brava! Desktop have been upgraded to support the most recent releases of the popular view and mark-up tools. Document Locator now integrates with Brava! Enterprise version 6.1, and Brava! Desktop version 2.2. In addition to supporting the latest releases, Document Locator's integration now includes functionality that integrates Brava! Desktop's dynamic stamping feature with Document Locator's profile property metadata. With this enhancement, users can create and apply dynamic stamps using Brava! Desktop that automatically extract profile property information from Document Locator as the stamp is applied.

Improved Windows installer

The new installation package for version 5.3 has been enhanced, and depending on computer configuration, users may realize significant performance improvements.

The installation package no longer creates Microsoft Windows Installer Darwin descriptors in the registry. Darwin descriptors are encrypted entries in the computer registry designed to allow Windows Installer to determine if a component being launched is corrupt or missing. However, the process of reading the registry and analyzing the COM components as they are accessed caused noticeable performance degradation for some users with older systems or with virus scanning software that intercepts registry reads.